

Latest Version: 6

Question: 1.

Which two statements accurately describe functions and components of Tier 3 in the Server Protect architecture? (Choose two.)

- A.It is comprised of Normal Servers.
- B.It is comprised of Information Servers.
- C.It stores all information for Normal Servers.
- D.It is comprised of the Management Console.
- E.It runs the Server Protect scanning component.
- F.It centrally manages multiple file servers and domains.

Answer: AE

Question: 2.

What type of connection does Trend Micro recommend between an EMC Celerra File Server and the Server Protect server?

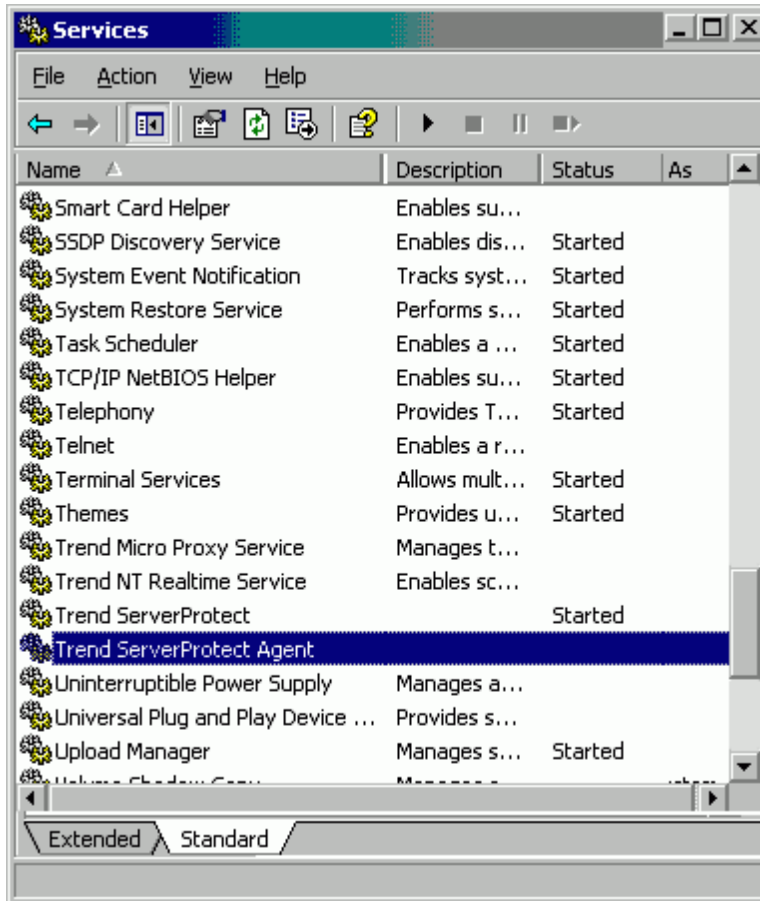
- A.T1 line
- B.1 Gbps
- C.10 Mbps
- D.100 Mbps
- E.256 KB Relay

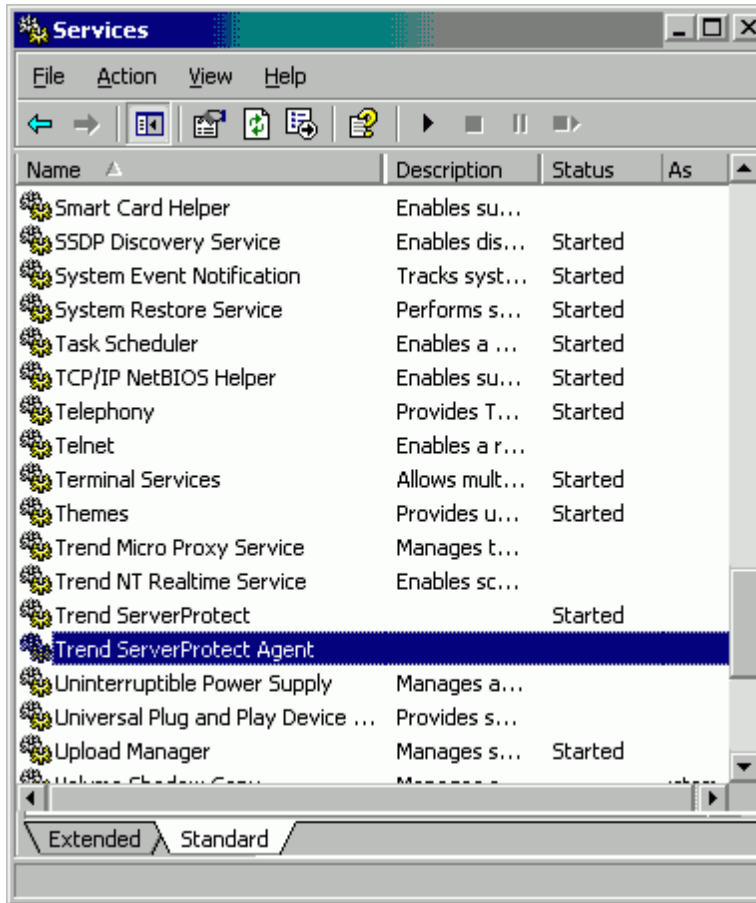
Answer: B

Question: 3.

Click the Exhibit button.

You have just installed Server Protect on a Windows 2000 Server that you will use as an Information Server. When you access the list of services in the Services applet for this server, you see the window displayed in the exhibit. Which conclusion can you make about the installation?





- A.Information Server installed correctly.
- B.Normal Server is running on the Windows 2000 Server.
- C.The current server is not virus-protected by Server Protect.
- D.Information Server is running and the associated Normal Servers are communicating with the server.

Answer: B

Question: 4.

When you arrange the sequence of functions in a task, which function must be listed last?

- A.Scan Now
- B.Deploy function
- C.Purge Logs function
- D.Generate Virus-Scanning Statistics

Answer: B

Question: 5.

Which scan type is used by the Default Scan task?

- A.TSC Scan
- B.File-type Scan
- C.Scheduled Scan
- D.Profile-based Scan

Answer: C

Question: 6.

Which file or directory should be placed in the Exclusion List?

- A.all *.ini files
- B.all *.tmp files
- C.\SPROTECT\SYS
- D.\SPROTECT\TEMP
- E.all compressed files (*.zip, *.arj, and *.lhz)

Answer: D

Question: 7.

How many methods of notification can be used to send alert messages for the same event?

- A.one method per event
- B.three methods per event
- C.up to half of the methods available
- D.all methods can be used for any event

Answer: D

Question: 8.

Your company has recently reorganized and moved three branch offices into a new region. You want to reorganize the groupings of Normal Servers connected to the network to match this corporate reorganization. Which menu should you use from the Server Protect Management Console to make this change?

- A.Do
- B.Help
- C.View
- D.Domain
- E.Configure
- F.Information Server

Answer: D

Question: 9.

You are a new anti-virus specialist for a large company. You are in charge of a domain of NetWare-based servers called NETWARE. One of the first actions that you need to perform is to update the scan engine. When you log on to the Management Console, you do not see any of the servers you need to update. What can you do to manage your servers?

- A.On each NetWare server, you manually load the spnwsvc.nlm.
- B.In the Management Console, you remove the NETWARE domain from the filtered domains list.
- C.In the Management Console, you create a new domain and add each of the NetWare machines as Normal Servers in that domain.
- D.On each NetWare server, you extract hotfix.ini and lprotect.nlm from the hotfix.zip file. You extract these two files to the \Sprotect\Hotfix\NW\ folder.

Answer: B

Question: 10.

After you roll back a virus-pattern and program update, the version numbers shown on the Update screen are incorrect. Why are the version numbers incorrect?

- A.The Update page needs to be refreshed.
- B.The Information Server is not communicating with the Normal Server. The connection between the servers may be terminated, or the Normal Server may have gone down.
- C.The rollback failed because the previous versions of the virus-pattern file and the program file are corrupted, and Server Protect requires a valid virus-pattern file and program file.
- D.The Update screen shows the version of the files that are saved on the Information Server. During a rollback, Server Protect instructs the Normal Server to roll back to the previous version of program and pattern files.

Answer: D