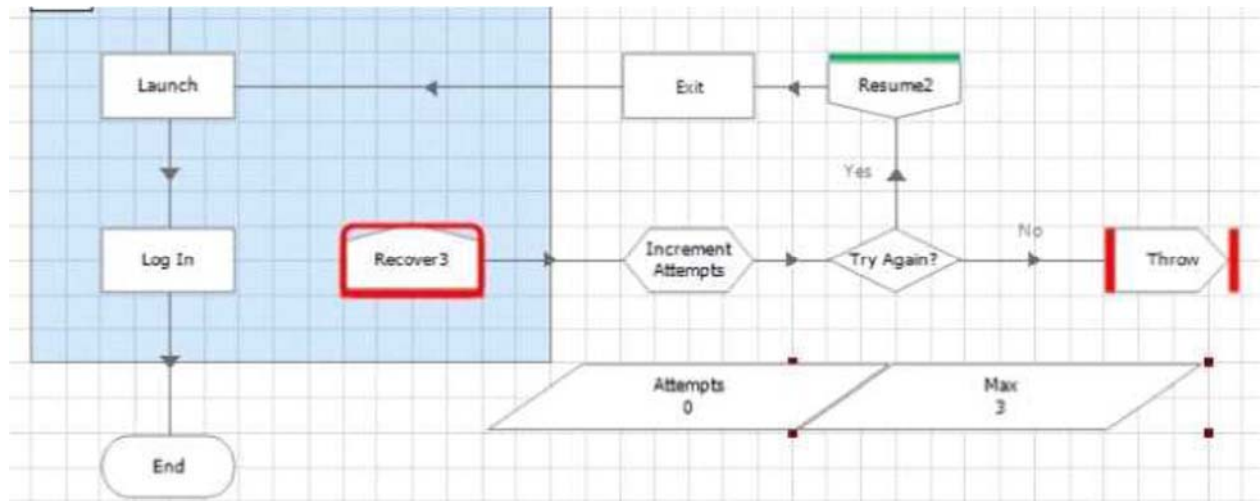


Question: 1

Exhibit:



The Process is intended to attempt to perform the processing in the recover block, Block 3. a maximum of three times before throwing an exception.

Data Item 'Attempts' is a number data item with an initial value of 0

Data Item "Max Attempts" is a number data item with an initial value of 3

The 'Increment Attempts' calculation stage add 1 to the attempts value and outputs a result to the "Attempts" data item

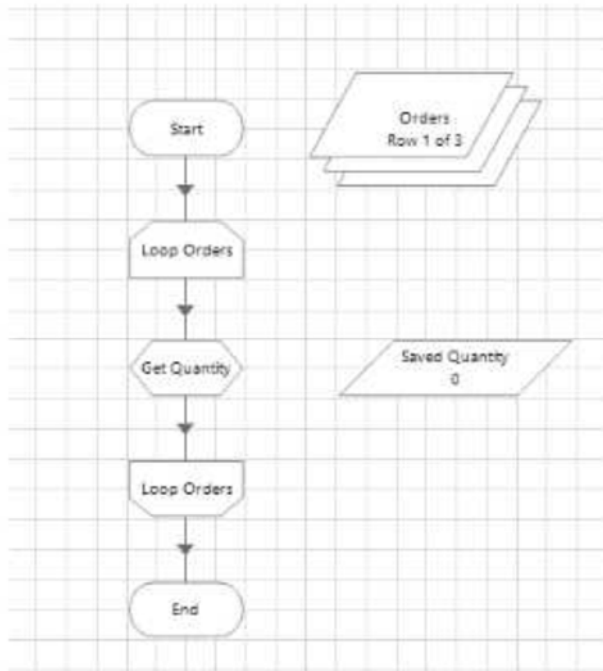
To enable this to work correctly, what is the correct expressions for the Try Again' decision stage?

- A. $[Attempts] < [Max]$
- B. $[Attempts] > [Max]$
- C. $[Attempts] = [Max]$
- D. $[Attempts] + 1$

Answer: A

Question: 2

Examine the following process flow:



The Orders Collection contains the following data

Fields	Initial Values	Current Values
Order Number (Text)		Quantity (Number)
1001		4
1002		5
1003	<input type="text" value="10"/>	10

The Saved Quantity Data Item is configured as a number with the initial value 0.
 The Loop Orders stage is configured to loop though the Orders collection.
 The Get Quantity stage is configured as follows:

Calculation Properties

Name:

Description:

Expression

`[Saved Quantity] + [Orders.Quantity]`

Saved Quantity

What will the data item Saved Quantity contain after the execution of the page?

- A. 4
- B. 5
- C. 1
- D. 19

Answer: D

Question: 3

How many Start Stages can a sub-page in a Process have?

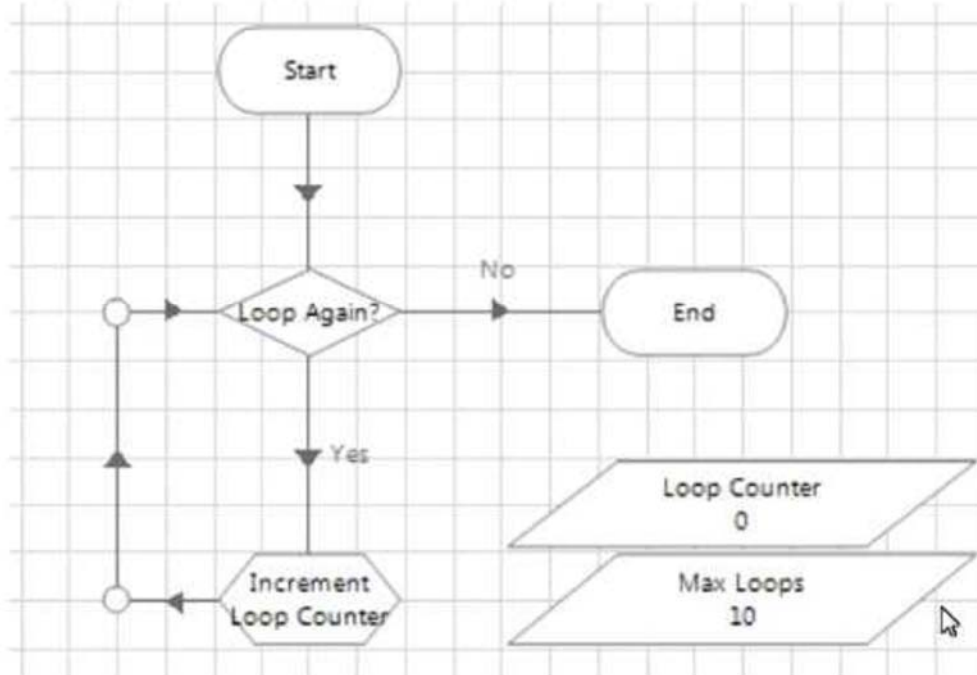
- A. 0
- B. 1
- C. 2
- D. Any Number

Answer: B

Question: 4

Exhibit:

Study the following process flow:



The data item "Loop Counter" is a number data item and has an initial value of 0. The data item "Max Loops" is a number data item and has an initial value of 10.

The two stages are configured as follows:

Decision Properties

Name: Loop Again?

Description:

Expression

`[Loop Counter] < [Max Loops]`

Validate

Evaluate Expression

Calculation Properties

Name: Increment Loop Counter

Description:

Expression

[Loop Counter]

Validate Evaluate Expression Store Result In Loop Counter

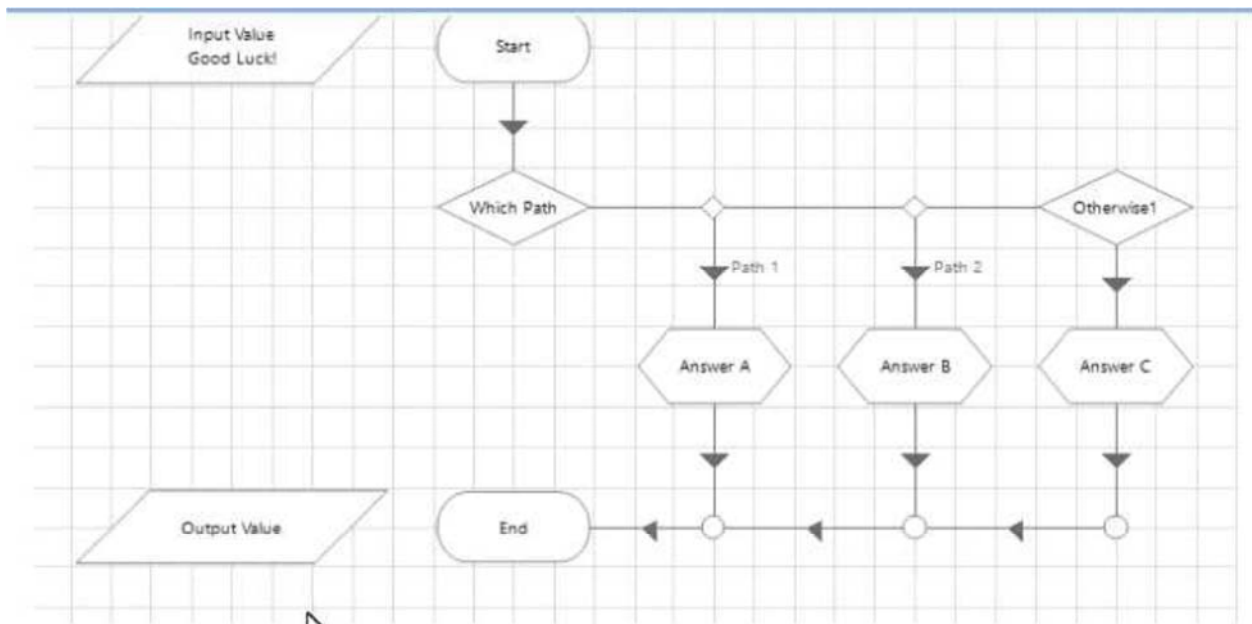
How many times will the Loop Again stage be executed when the page is executed?

- A. 10
- B. 9
- C. 11
- D. The loop will be infinite

Answer: D

Question: 5

Exhibit:



Choice Properties

Name:

Description:

Choice Name	Choice Criterion
Path 1	StartsWith([Input Value], "G")
Path 2	Right([Input Value], 4) = "Good"

The calculation stages contain the following:

Calculation Properties

Name: Answer A

Description:

Expression

A

Validate Evaluate Expression Store Result In Output Value

Calculation Properties

Name: Answer C

Description:

Expression

C

Validate Evaluate Expression Store Result In Output Value

What will be the outcome after the page has run?

- A. Data Item Output Value contains A
- B. Data Item Output Value contains B
- C. Data Item Output Value contains C
- D. An Internal Exception will be thrown

Answer: D