

Question: 1

On the simulated Windows desktop carry out the necessary steps to restart the computer.



A. Select->start->shutdown->restart->ok

Answer: A

Question: 2

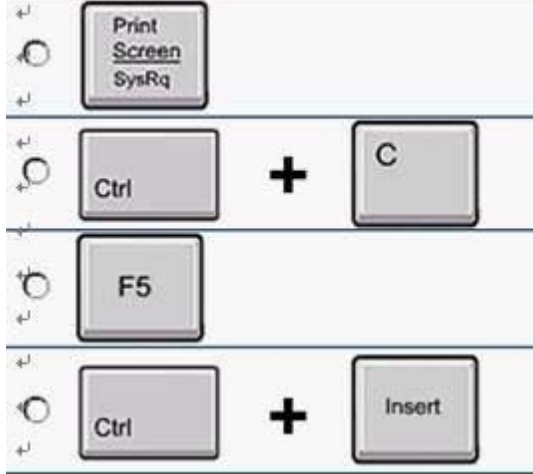
If the computer application you are working on has "frozen" what is the first thing you should do?

- A. Re-install the non-responding application.
- B. Press ctrl+Alt+Delete.
- C. Turn off the PC's power supply.
- D. Select Exit from the application's File menu.

Answer: B

Question: 3

Pressing which of the following keys would place a picture of what is currently displayed on your monitor onto the clipboard?

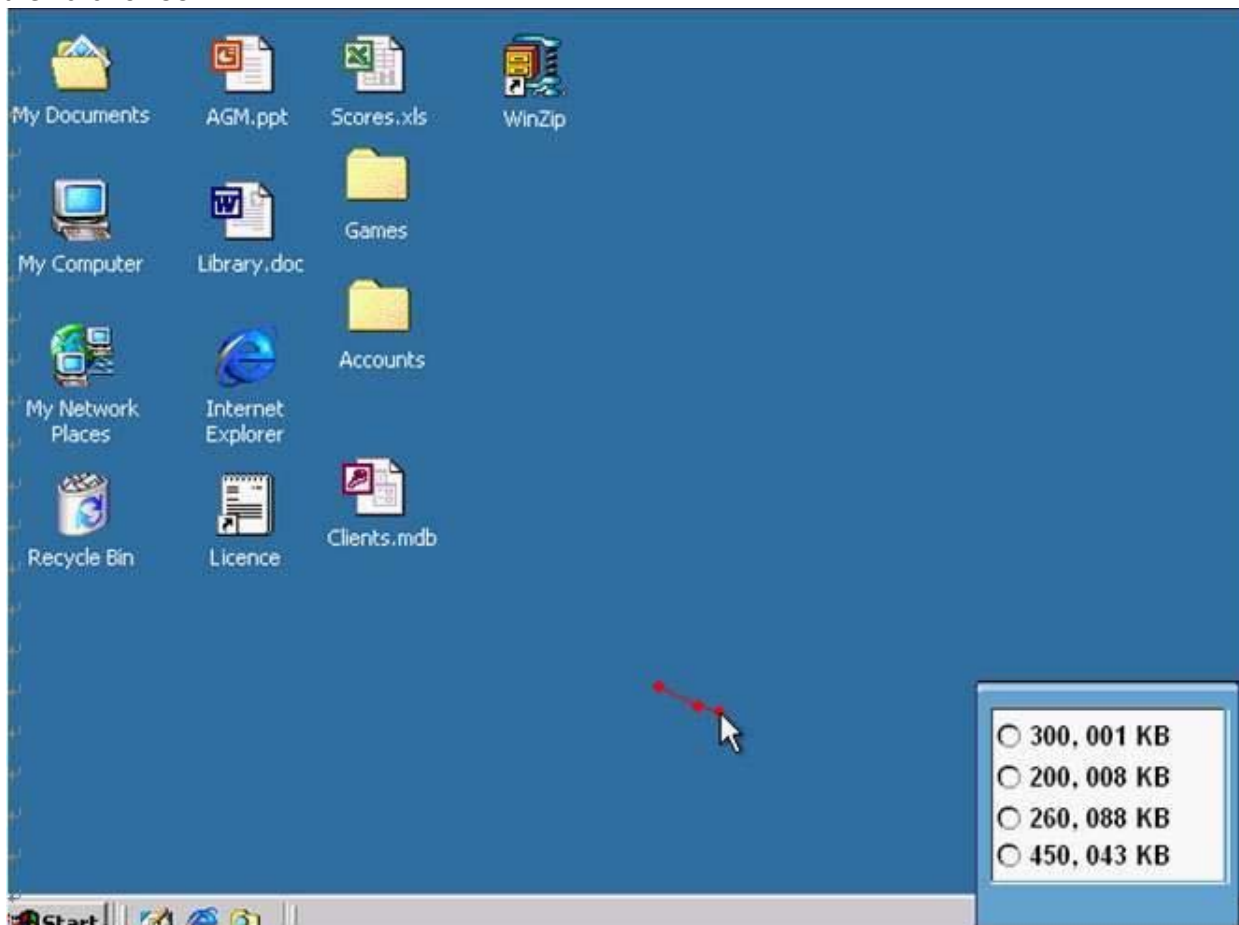


A. A

Answer: A

Question: 4

Use the simulated Windows Desktop to find out how much RAM is installed. Select the appropriate radio button then click on SUBMIT.

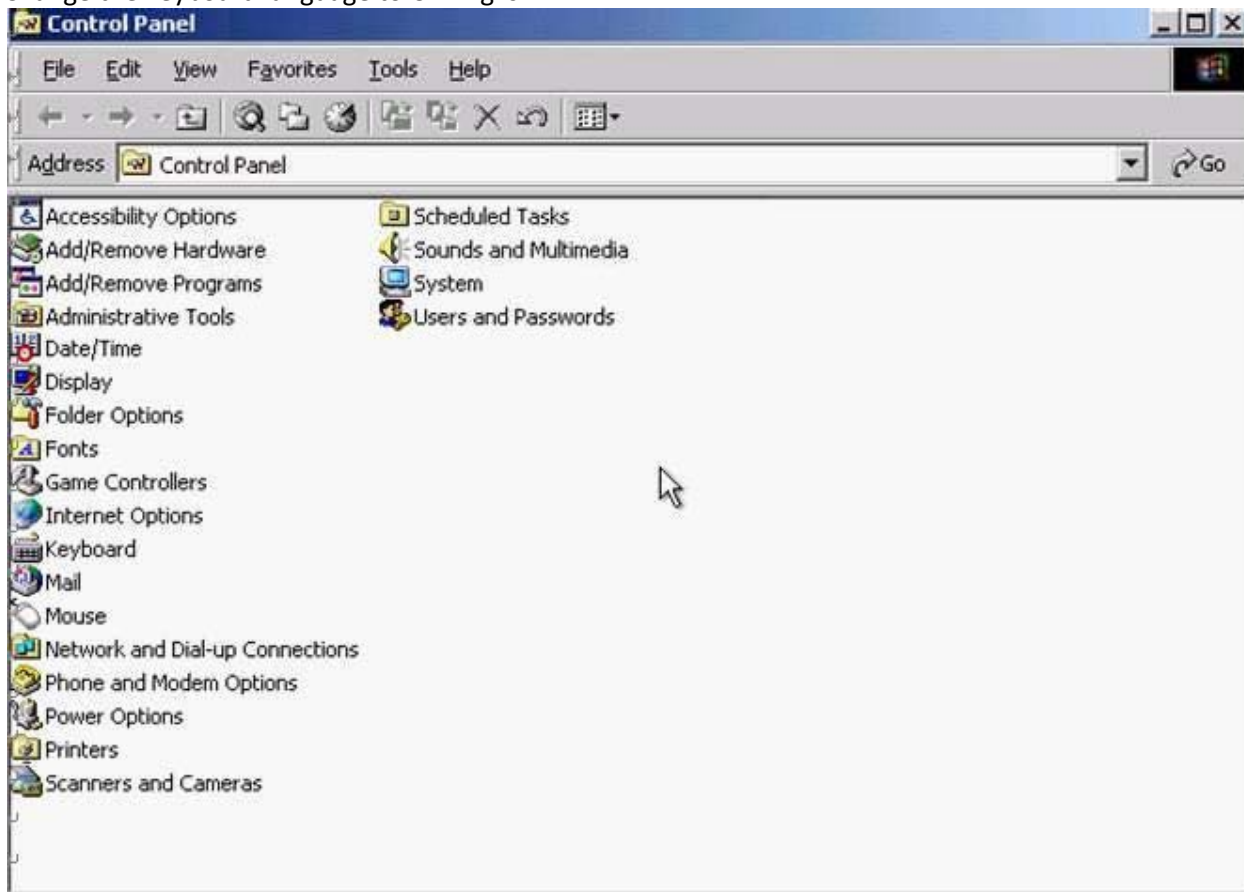


A. R.click on my computer->properties->General->select the RAM Speed->ok

Answer: A

Question: 5

Change the keyboard language to UK English.



A. Select->keyboard->input Locales->select to English UK->press Set as Defaults->ok

Answer: A